

White Jacket



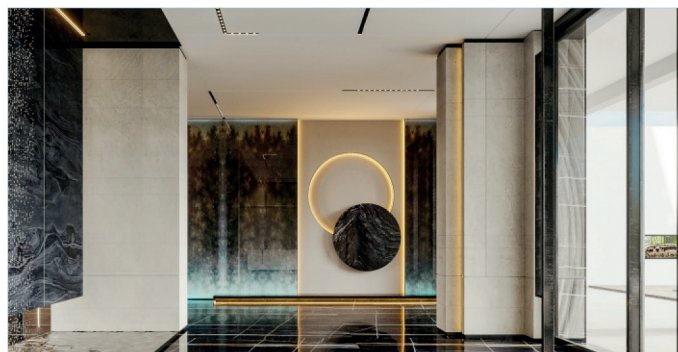
Black Jacket



FEATURES

REV01

- Multibending is available to fix many plane, curved, and complex irregular structures at will.
- Noble and elegant appearance in white or black jacket.
- Anti-glare effect with honeycomb cover design with UGR<19.
- On-site processable to be any length with the zero module feature.
- Uniform, dot-free, and smooth lighting performance up to 5M[16.4ft.].
- Dimmable available with PWM signal.
- Environmentally friendly, high-grade appearance, soft bend flexibility, strong impact resistance, and high weather resistance using food-grade silicone material.
- IP67 and IK06 for both indoor and outdoor usage.Application.

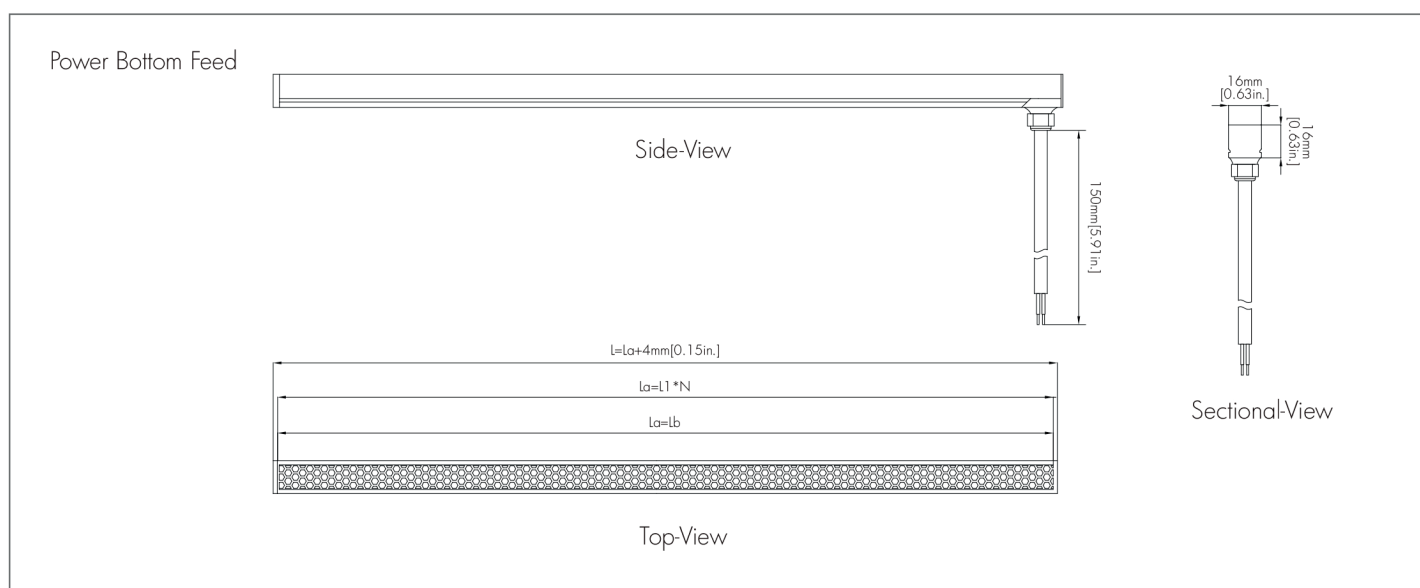
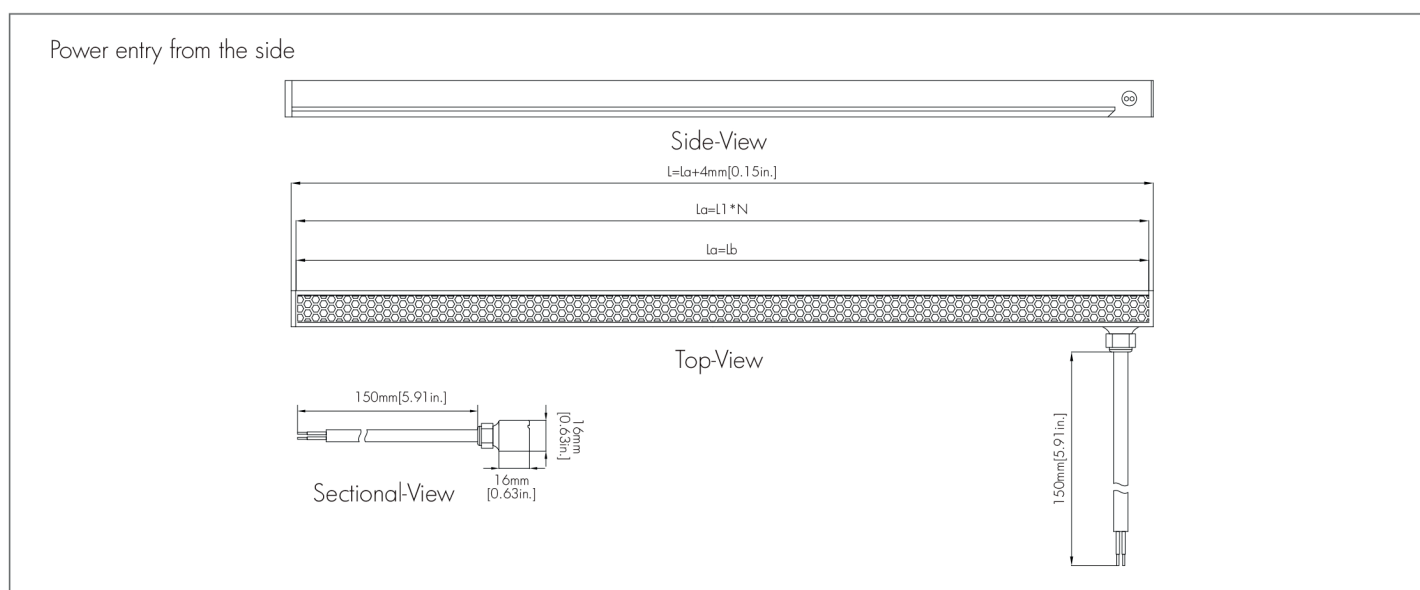
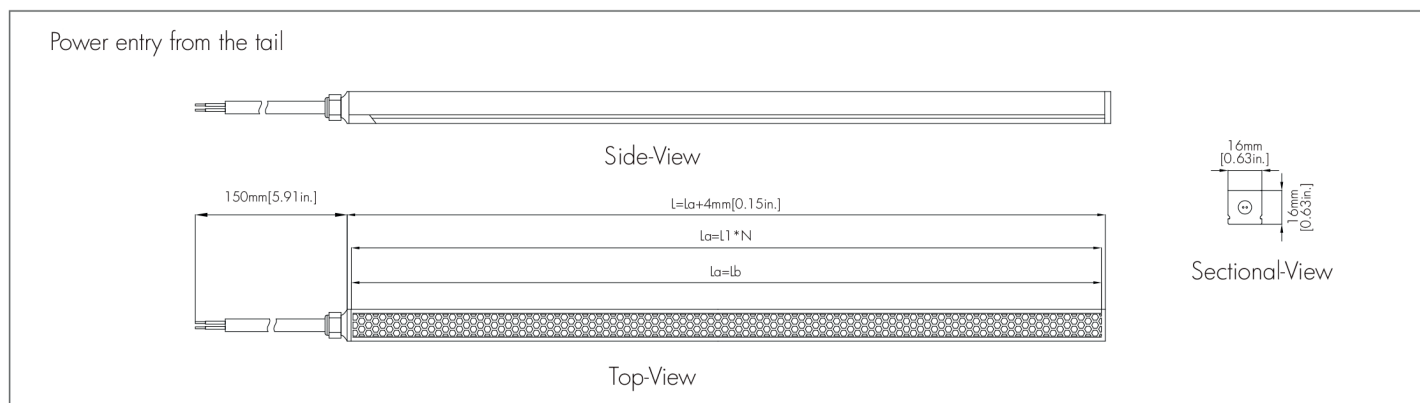


Diagram

Endcap sealed by die-casting process

L: Total length
Lb: Luminous length
N: Number such as 1, 2, 3.....

La: Length of inner LED strip
L1: Increment



General Parameters

Style	Dimension	Max. Run Length (La) & Max. Shipping Length	Strip Increment (L1)	LED Type	LED QTY	IP&IK Rating	Operating Ambient	Lifespan	Warranty
Multibending (White) Std-Efficacy White/Black Jacket	W16xH16mm W0,63xH0,63in	5m [16,4ft]	ZERO MODULE TECHN. cut it anywhere	SMD 2835	120LED/m [36LED/ft]	IP67	Ta: -20~45°C -4~113°F	50.000h(L70@ Tc≤65°C [149°F], Tc is the temp. of LED pin)	5 years (indoor) 3 years (outdoor)
Multibending (White) High-Efficacy White/Black Jacket			50mm [1,97in]						

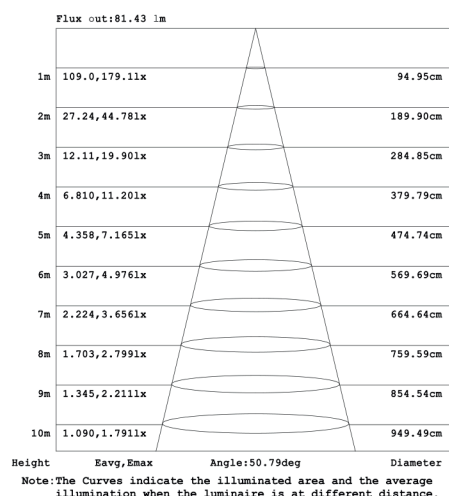
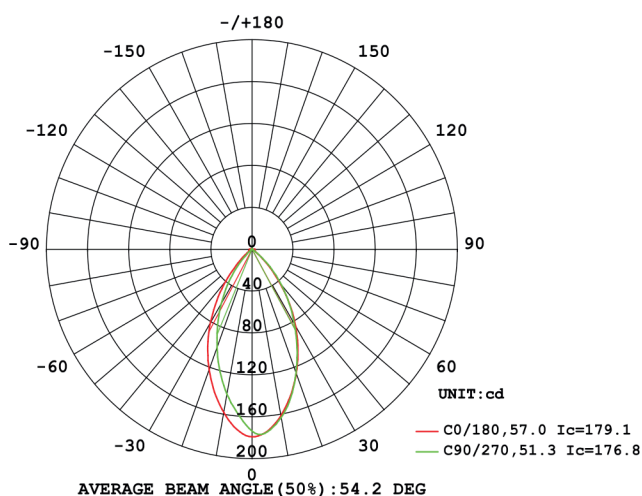
Photoelectric Parameters

Style	Power ±10%	Operating Voltage	Finished Product CCT/ Wavelength	CRI80, 4000K		CRI90, 4000K		Beam Angle
				Luminous Flux±10%	Light Efficiency	Luminous Flux±10%	Light Efficiency	
Multibending (White) Std-Efficacy White/Black Jacket	14W/m [4,27W/ft]	24Vdc	2700K 3000K 4000K 5000K	154lm/M [47lm/ft.]	11lm/W	140lm/M [43lm/ft.]	10lm/W	50° (UGR<19)
Multibending (White) High-Efficacy White/Black Jacket				308lm/M [94lm/ft.]	308lm/M	280lm/M [85lm/ft.]	20lm/W	

Note:

- (1) luminous flux for CCT 2700K is 10% lower, for CCT 3000K/3500K is 5% lower, for CCT 5000K/6000K is the same, compared with 4000K.
- (2) The power of the strip need to be reduced to 9W/M[2.74W/ft.] for operating ambient temperature in -20~55°C[-4~131°F].
- (3) The standard packing length is fixed by default per reel without installation accessories, customized packing need to be evaluated.
- (4) Installation accessories pack should be ordered separately according to specific case.

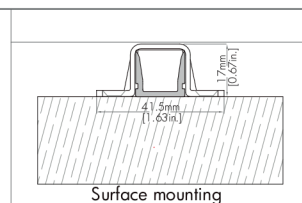
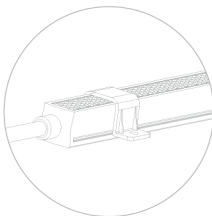
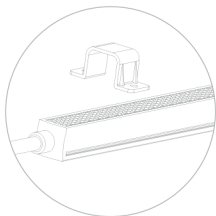
Light Distribution Diagram



4000K, CRI80

Installation

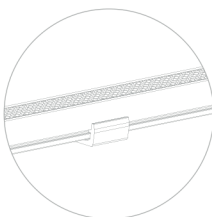
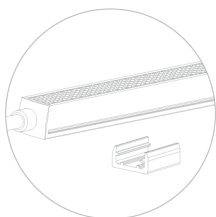
Fixed by clip and screw



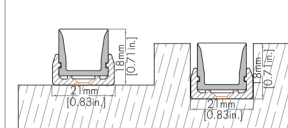
Surface mounting

Note: Transparent color is standard. PC material is not recommended for long-term exposure to outdoor sunlight.

Fixed by bracket and screw



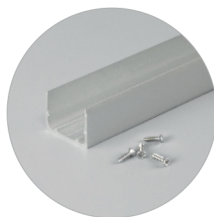
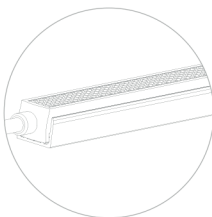
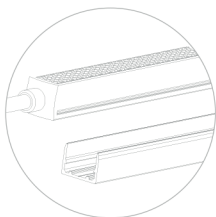
Space & Groove are shown as below



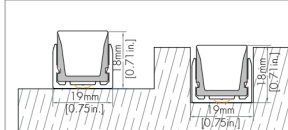
Surface & Recessed mounting

Note: White color is standard, black color is optional. PC material is not recommended for long-term exposure to outdoor sunlight.

Fixed by aluminum profile and screw



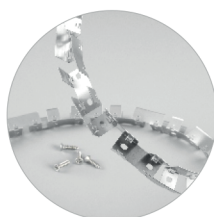
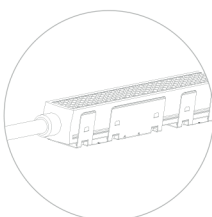
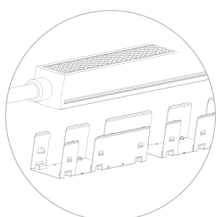
Space & Groove are shown as below



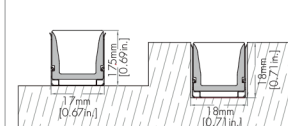
Surface & Recessed mounting

Note: Silver color is standard, black color are optional.

Fixed by bendable bracket and screw



Space & Groove are shown as below



Surface & Recessed mounting

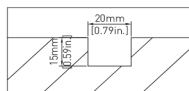
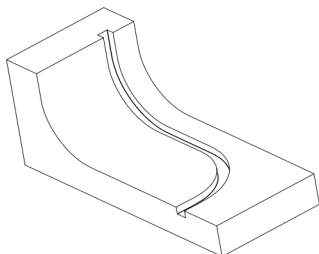
Note: Silver color is standard; white and black color are optional and shipped in 1M[3.94ft.] per piece.

Note: It's also support surface & recessed mounting by gluing process.

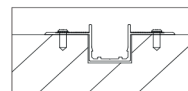
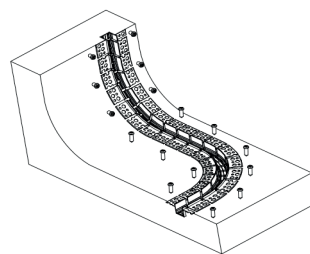
Installation

Fixed by plaster-in aluminum profile and screw

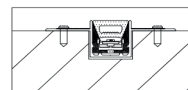
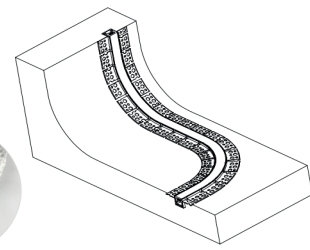
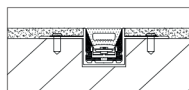
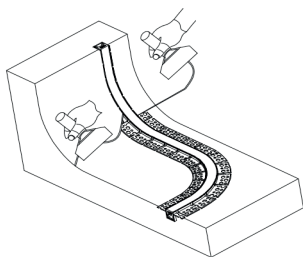
(The bending method of the profile during use, should be determined based on the bending method of the neon strip.)



Make a groove with the size of W20*H15mm[W0.79*H0.59in.] on the mounting surface.



Fix the plaster-in aluminum profile to the groove by screw.



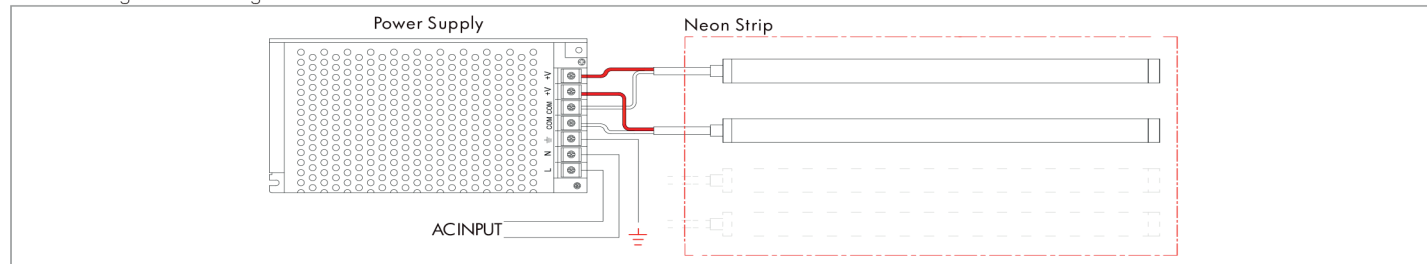
In addition to the neon strip, the areas on both sides of the illuminated surface should be plastered and dried before completion.

Press the neon strip into the plaster-in aluminum profile.

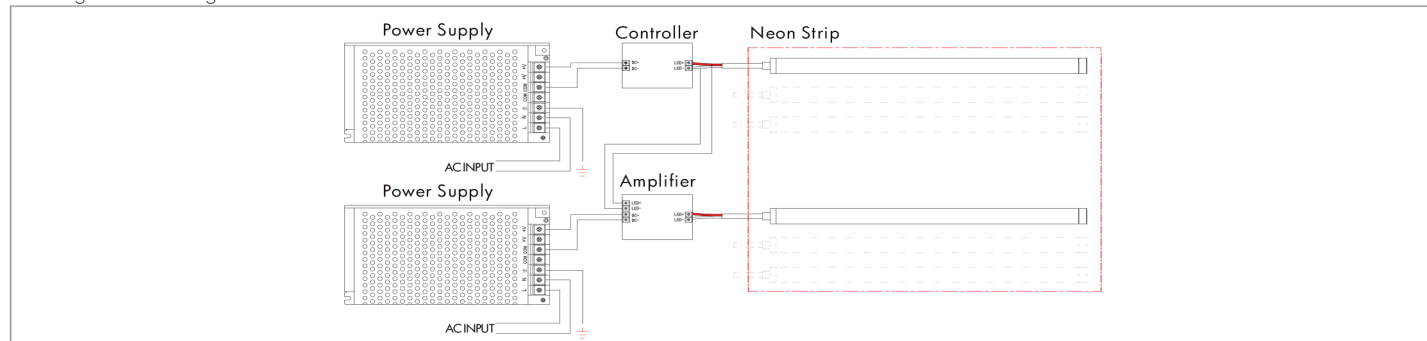
Attention: Aluminum profile can not be used in swimming pool.

Connection

Non-Dimming Status for Single Color



Dimming Status for Single Color



Notice

1. Adopt suitable power supply with power is 20% higher than the max. power of product, to ensure long time performance of power supply.
2. Do not install it when power is on. Before powering on, make sure the wiring is correct.
3. Avoid privately changing or damaging the circuit or other component on the product.
4. Avoid scrape, twist and irregular bend during installation, which might cause non repairable status for the product.
5. Minimum bending diameter definition, is 120mm[4.72in.] for top-bend and 280mm[11 in.] for side-bend, too small bending diameter will break the product.
6. Minimum twist angle definition, is 360° per 1000mm[39.4in.] length.
7. Product linked in over long length will lead to problem of overload or uneven brightness.
8. To protect your eyes, do not stare at the product for a long time while it's illuminated.
9. Only professional personnel can install, dismantle and repair.
10. Bend and twist diagram is shown as below.

